

How to Set Up Your League

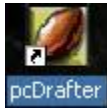
The following tutorial will help you quickly see how easy PC Drafter is to use as you configure your fantasy league with your own rules, teams, draft order and positions.

Overview

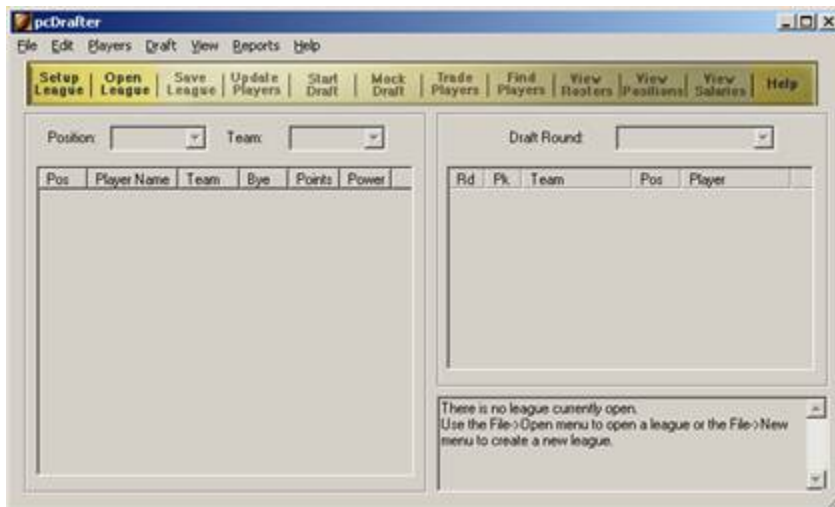
pcDrafter was designed to make configuring your league as simple as possible. However, we recognize that each league is unique and may require some special settings. With this in mind, the following tutorial will take you through the first thing you need to do when running pcDrafter: setting up your league.

Open the League Setup Wizard

- From your desktop, run pcDrafter by double-clicking the pcDrafter icon pictured below.



- Once pcDrafter is running on your screen, select the **Setup League** button at the top of the main pcDrafter window pictured below. This will start the **League Setup Wizard**, which will walk you through the process of configuring your league.



Setup League Wizard – Page 1

The screenshot shows a window titled "New League Setup - Page 1". It contains the following fields and controls:

- League Name: [Text Input]
- Number of Teams: [Spin Box] 10
- Roster Size: [Spin Box] 15
- Draft Style: [Dropdown Menu] Serpentine
- Team Salary Cap: [Text Input] 0
- Minimum Player Salary: [Text Input] 0

Below the fields is a scrollable text box with the following text:

A serpentine draft is a traditional draft method that is configured in a serpentine manner. For example, in a 10 team league, the draft order for the first round will proceed 1-10. In the second round, the order will be 10-1. This order will repeat throughout the draft.

At the bottom of the window are four buttons: "< Back", "Next >", "Cancel", and "Help".

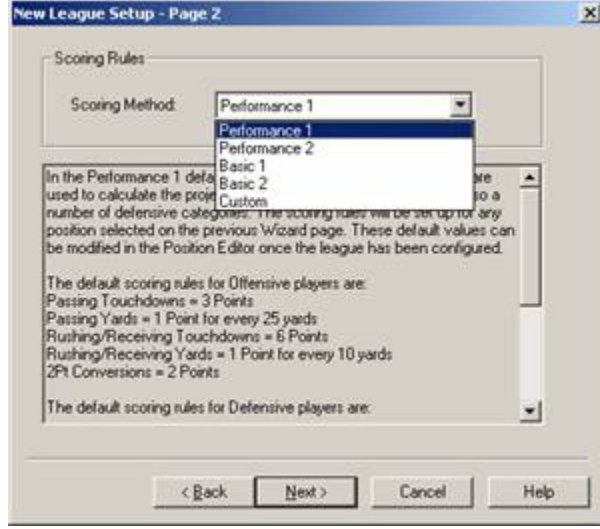
Page 1 of the League Setup Wizard (pictured above) requires you to enter some general information about your league. Note that all of this information can be edited at a later time if additional teams are added to the league, or the roster sizes change.

The only exception to this rule is the **Draft Style**. If you select one of the traditional draft methods (Serpentine/Cyclical), you will not be able to change the league to an **Auction** league once the league has been created. This will require a new League Setup. (The reverse is also true. An **Auction** league cannot later be changed to one of the traditional leagues.)

Also note that the **Team Salary Cap** and Minimum **Player Salary** fields are not available unless the league is an **Auction** league.

Click the **Next** button to continue once you have set all the appropriate values.

Setup League Wizard – Page 2



Page 2 of the League Setup Wizard requires you to select the default scoring rules for your league. We recognize that all leagues are different, and one of the benefits of using pcDrafter is that you can configure the scoring rules to match your individual league. However, selecting one of the default Scoring Methods from this list allows pcDrafter to give you a jump-start on configuring your league. The detailed breakdown for each Scoring Method is provided in pcDrafter.

Note that all of the scoring rules can be modified at any time if your rules change or if you make a mistake.

Click the **Next** button to proceed to the next screen.

Setup League Wizard – Page 3



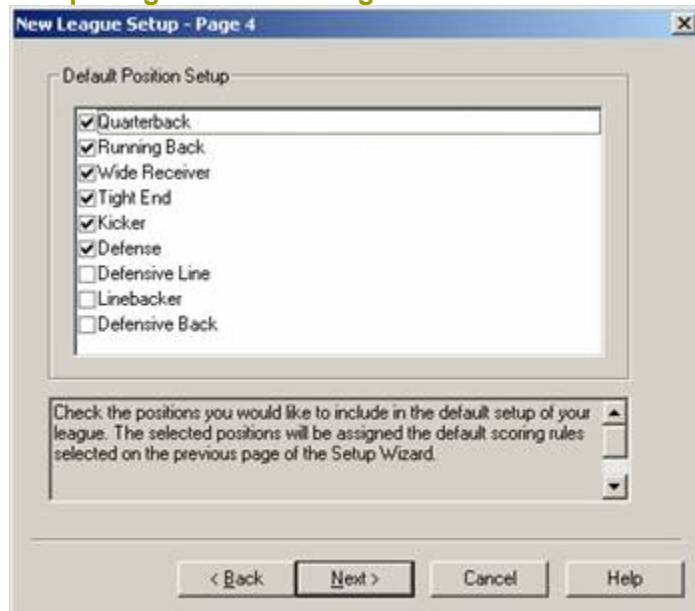
Page 3 of the League Setup Wizard requires you to select the Player Valuation Method you want to use during your draft. A detailed description of each method is displayed in pcDrafter when you select each method. In most cases, you will want to select the new and powerful Gold Method to calculate your player rankings.

The only exception is the for Auction leagues, the Simple VBD is the only option available. This corresponds to the fact that the Gold method is targeted at helping you draft the best possible team based on your needs, whereas an auction league relies on more general information about the needs of the league as a whole.

Remember that if you select the Custom option, you will need to configure all of the scoring rules from scratch.

Click the **Next** button to proceed to the next screen.

Setup League Wizard – Page 4



Page 4 of the League Setup Wizard requires you to select the positions that will be included in your league. These positions will have the default scoring rules from the previous screen applied by default.

As with the other screens, you can always add or remove positions at any time, once your league is created.

It is important to note that only players matching the selected positions will be imported when you load a player file.

Click the **Next** button to proceed to the next screen. (Note that you will only be able to select the **Next** button if at least 1 position is selected.)

League Setup Wizard – Page 5

Please enter the following position information to continue:

Min - If your league requires you to draft a Minimum number of players for a given position, enter it below. If not, keep Min=1

Max - If your league has a Maximum on the number of players you may

Selected Position Setup

Name	Min	Max	Starters	Scoring Rules
Defense	1	7	1.00	Complete
Kicker	1	7	1.00	Complete
Quarterback	1	7	1.00	Complete
Running Back	2	7	2.00	Complete
Tight End	1	7	1.00	Complete
Wide Receiver	2	7	2.00	Complete

< Back Next > Cancel Help

Page 5 of the **League Setup Wizard** may be the most important page. This is where you will modify and customize the settings for each position. These settings will allow pcDrafter to accurately rank you players, calculate their projected points and power, and allow roster validation as your draft progresses.

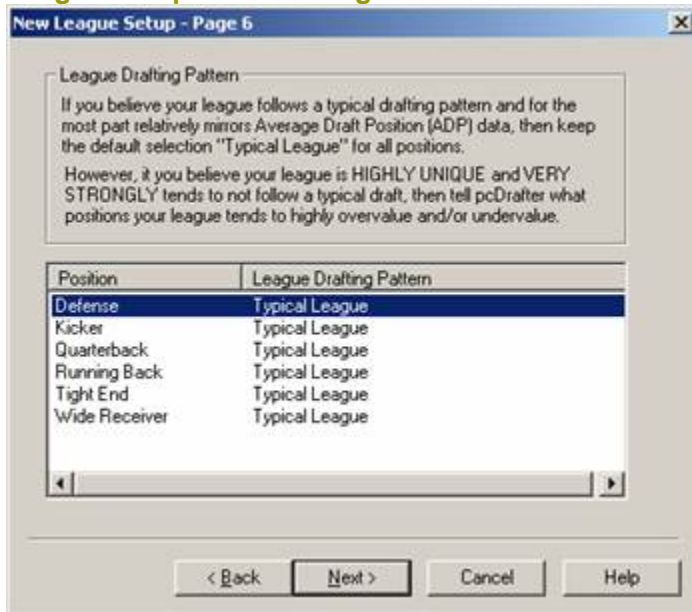
The **Min** and **Max** values are the minimum and maximum number of players that can be drafted from each of the positions. Even if you have an “open” roster, you should enter **Min** and **Max** values that most accurately reflect the number of players that will be drafted from each position.

The **Starters** are the number of players that will typically start each week for each team. This is the field that most directly affects the power calculations for the Gold Algorithm and the Simple VBD algorithm, by providing the core number of players to consider for each position. Note that you can enter decimal values for this position. (For example, if your league has a flex position and half the teams start a WR and half start a RB, you could add a “.5” value for each position on top of the regular number of starters.) Even if a position does not require a starter from a position, you may want to enter a 1 in this value.

The **Scoring Rules** column simply displays reminder about whether the scoring rules for each position have been configured. If any position is flagged as Incomplete, or you want to validate the scoring rules, simply double-click the position to open the **Position Editor**, where you can modify the scoring rules.

Click the **Next** button to proceed to the next screen.

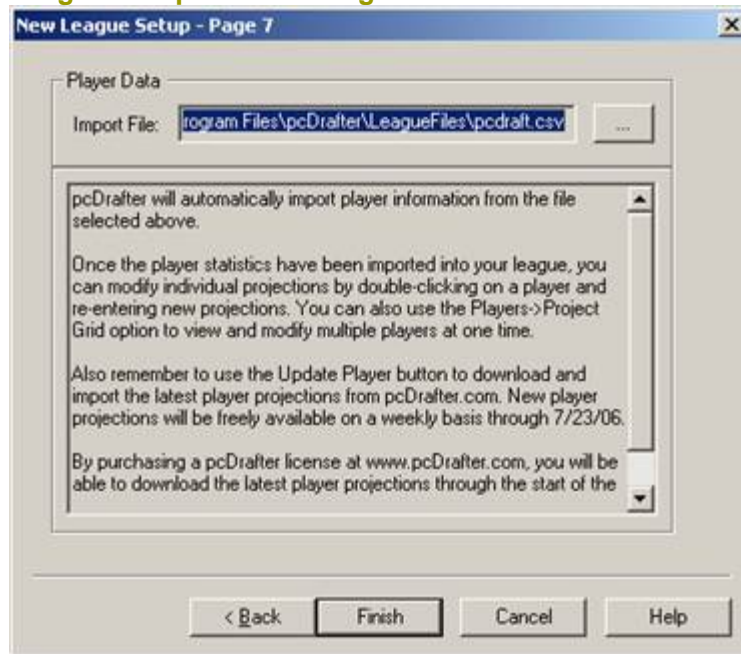
League Setup Wizard – Page 6



Page 5 of the **League Setup Wizard** allows you to adjust the Gold and Simple VBD results for very unique leagues. If your league is VERY unique and has a specific drafting pattern that is not typical, you can notify pcDrafter on this screen. This is more than simply saying, "My league drafts running backs early and kickers late". This setting would be for leagues where you can say "My league never drafts Tight Ends until the last two rounds." Or "My league drafts only running backs for the first 4 rounds no matter what." In most cases, the default selections should be accepted.

Click the **Next** button to proceed to the next screen.

League Setup Wizard – Page 7



The final step of the League Setup Wizard is to import the players into your league. By default, pcDrafter will load the latest player file provided by 4for4.com. If you have another player you have created or modified, you can change the default selection.

For most users, the default should be accepted.

Click the **Finish** button to create your league.

Conclusion

The only remaining item you may want to complete before beginning your draft is to actually set your League team names. To do this, select the Edit->League Teams menu option on the main pcDrafter screen.